

## Bringing the worlds best chillers to Australia

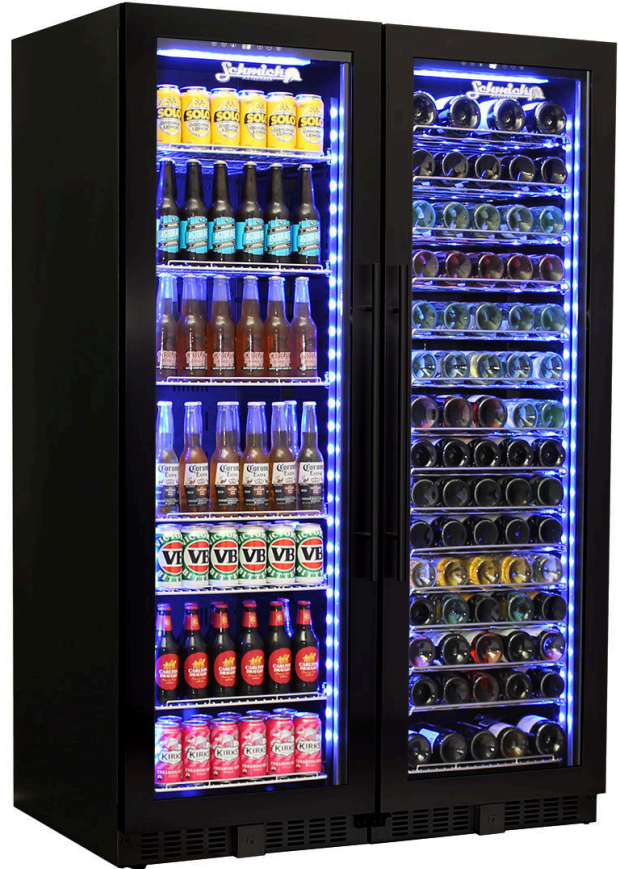
**MODEL:**  
**BD425-Combo-B**

**QUICK INFO**

A stylish reliable upright quiet running black glass door matching beer and wine fridge with quality brand name parts and plenty of features. The slimline door frame and soft blue LED lighting makes it a real showpiece for any entertaining area.

1 x Beer and 1 x matching wine fridge - lockable doors, triple glazed LOW E glass helps prevent condensation and an electronic touch button control. The sliding rubber wine bottle saddles allow every size wine bottle to fit with ease, a great feature.

The shelving can interchange beer and wine and also can be moved up/down, giving you plenty of storage options.



**PARTS AND ENERGY INFO**

- Triple Glazing
- LED lighting
- Cyclopentane foaming
- 12Volt Fans
- LOW E glass
- R600 100% ozone safe gas

**SPECIFICATIONS**

Capacity (litres)	405
Holds (cans)	360
Noise Level	43.00
Consumption	1.24Kwh/24Hrs
Unit dimensions (WxDxH)	1200 x 695 x 1800
Lockable	Yes
Gross weight	238 kg



\*\*Specifications and price of this product may change at any time  
\*\*For more information about this product please call us or visit our website.