

# Bringing the worlds best chillers to Australia

**MODEL:**  
**SK168-Combo**

**QUICK INFO**

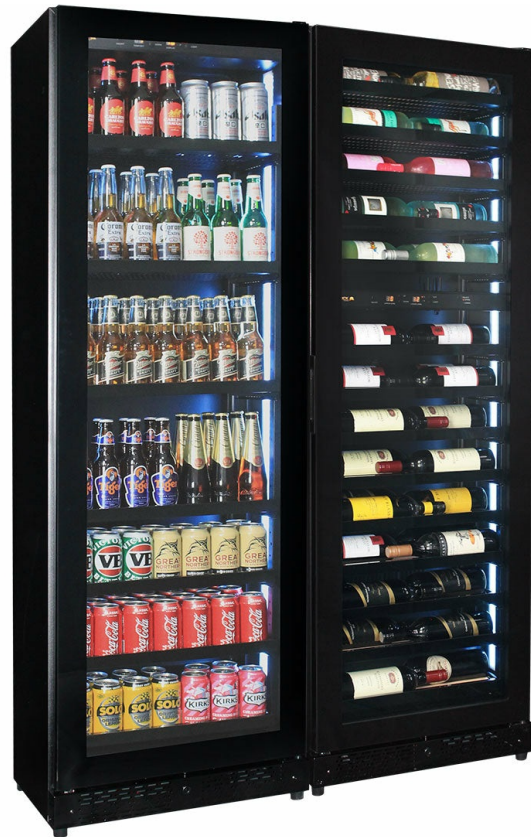
Classy upright quiet running beer and wine fridge combination designed especially with a shallow depth for areas where space is a premium. Unit is front venting and designed to be free-standing OR built into a cavity; it comes with special brackets to attach to the wall for stability. Both beer and wine zones are 1-18°C.

It has the highest quality inverter-driven EMBRACO brand compressor that is excellent for low energy usage when cooling and the 'dimable' 5 x LED light colour choices of white, red, orange, blue or green make a great feature.

**\*\* Remember brackets come with unit to secure to wall - being so shallow it has a small chance to topple if empty and opening door \*\***

**PARTS AND ENERGY INFO**

- Triple Glazing
- R600 100% ozone safe gas
- LOW E glass
- LED lighting
- Energy saving inverter compressor
- Cyclopentane foaming
- Comes Left Hinged (But Is Reversible)
- 12Volt Fans



**SPECIFICATIONS**

Capacity (litres)	209
Holds (cans)	120
Noise Level	43
Consumption	2.6Kwh/24Hrs
Unit dimensions (WxDxH)	1200 x 395 x 1820
Lockable	Yes
Gross weight	188 kg



Tested and registered to GEMS Act 2012, using ISO testing standard 23953-2, unit meets MEPS requirements.

\*\*Specifications and price of this product may change at any time  
\*\*For more information about this product please call us or visit our website.