

Bringing the worlds best chillers to Australia

MODEL:
HUS-SC700W

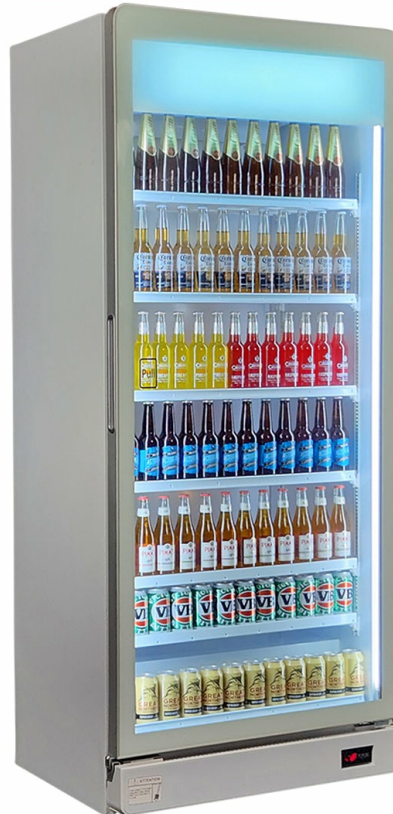
QUICK INFO

Super Looking Upright Triple Glazed Bar Fridge with plenty of shelving adjustments, led lighting, lock and castor wheels. A great product for your entertaining area, man cave or theater room.

The extra wide design looks great and with extra shelves you can fit 600 x CANS! Now that's what i call a party. Quality parts, 117 x shelf heights plus special lockable shelf clips so shelving is stable, very unique design.

PARTS AND ENERGY INFO

- Low Energy Compressor
- Triple Glazed
- LOW E Glass
- Door Sensor That Stops Operation While Stocking
- Low RPM Fan



SPECIFICATIONS

| | |
|-------------------------|------------------|
| Capacity (litres) | 737 |
| Holds (cans) | 600 |
| Noise Level | 47 |
| Consumption | 1.6Kwh/24Hrs |
| Unit dimensions (WxDxH) | 890 x 655 x 2130 |
| Lockable | No |
| Gross weight | 65 kg |



Tested and registered to GEMS Act 2012, using ISO testing standard 23953-2, unit meets MEPS requirements.

**Specifications and price of this product may change at any time
**For more information about this product please call us or visit our website.