

## Bringing the worlds best chillers to Australia

### MODEL: SK422R-W-HD

#### QUICK INFO

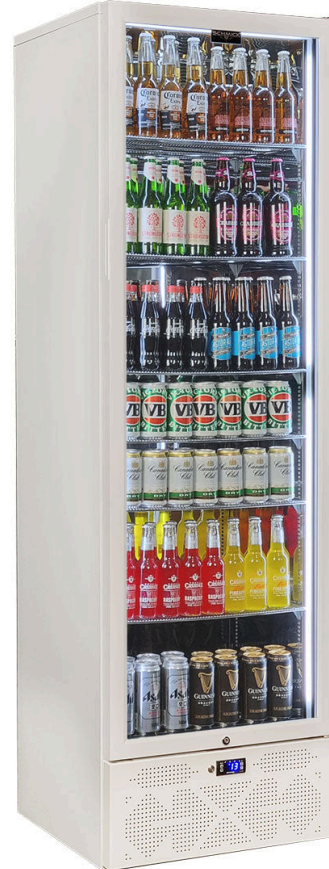
Schmick classy energy efficient upright glass door bar fridge with heated glass to prevent condensation, unit has polished stainless steel interior, reversible door, led lighting and is lockable to keep your kids from 'borrowing' ya brews.

Brand parts include German EBM fans and German Danfoss controller for reliable low cost operation, the blue or white led function is popular.

Fully adjustable shelving, led strip lighting can be chosen to be blue or white with press of a button is a great feature.

#### PARTS AND ENERGY INFO

- LOW E glass
- R600 100% ozone safe gas
- Triple Glazing
- LED lighting
- German energy saving EBM fans
- ECO controller
- Cyclopentane foaming



#### SPECIFICATIONS

Capacity (litres)	398
Holds (cans)	428
Noise Level	45.00
Consumption	3.27Kwh/24Hrs
Unit dimensions (WxDxH)	595 x 586 x 1996
Lockable	Yes
Gross weight	80 kg

**SCHMICK** Australia

\*\*Specifications and price of this product may change at any time

\*\*For more information about this product please call us or visit our website.