

Bringing the worlds best chillers to Australia

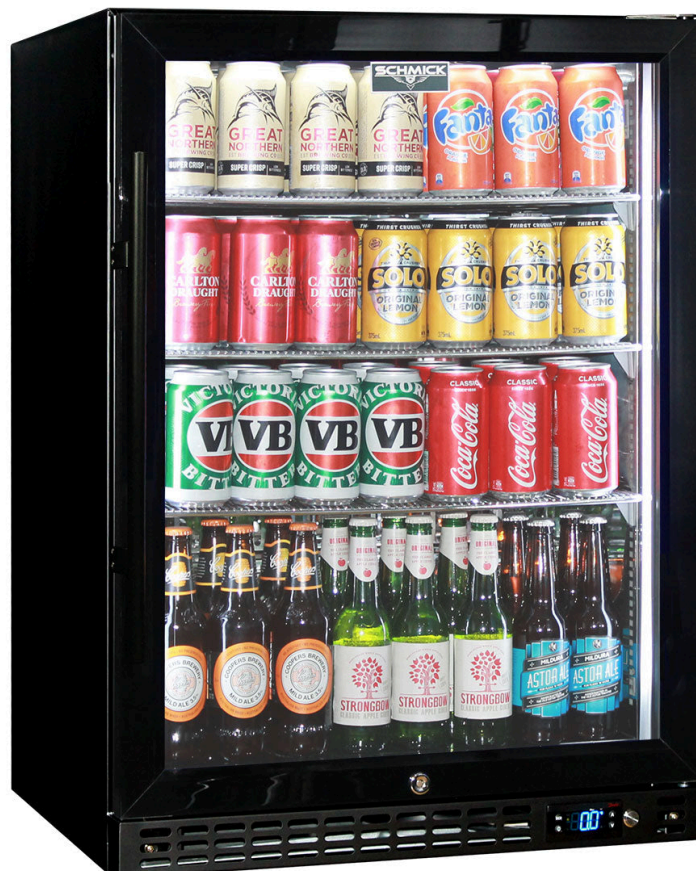
MODEL: SK156R-B

QUICK INFO

Quiet running low energy under bench front venting glass door bar fridge. Unit has triple glazed LOW E glass to help prevent condensation, the door is reversible with lock and brand parts include our own developed Schmick electronic ECO controller and German EBM fans for reliable operation.

Switchable 'colour' LED light can be either blue or white, units have 3 x full 'soft' strips on sides and inner top for great lighting effect.

This unit is also available in S/Steel frame and grill (Model SK156-SS), heated glass versions in S/Steel (models SK156R-HD & SK156L-HD), and solid door version, model SK156-SD.



PARTS AND ENERGY INFO

- Triple Glazing
- Schmick ECO Controller
- R600 100% ozone safe gas
- LOW E glass
- LED lighting
- German energy saving EBM fans
- Energy saving compressor
- Cyclopentane foaming

SPECIFICATIONS

Capacity (litres)	164
Holds (cans)	144
Noise Level	43.00
Consumption	1.21Kwh/24Hrs
Unit dimensions (WxDxH)	595 x 586 x 840
Lockable	Yes
Gross weight	44 kg



SCHMICK Australia

**Specifications and price of this product may change at any time

**For more information about this product please call us or visit our website.