

Bringing the worlds best chillers to Australia

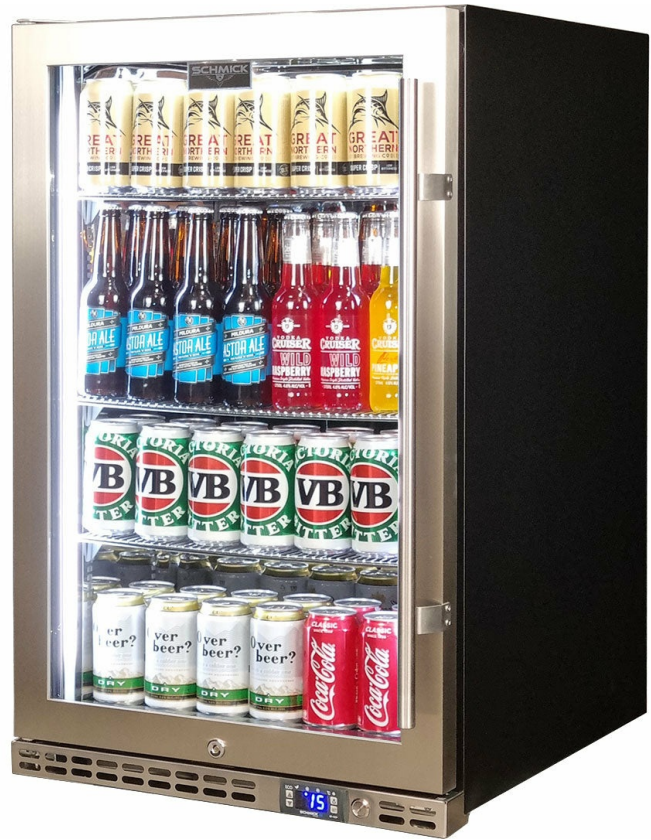
**MODEL:
SK146L-HD**

QUICK INFO

Quiet running under bench front venting glass door bar fridge. Unit has heated glass to stop condensation, the door is left hinged with lock and brand parts include a quality Schmick electronic controller and German EBM fans for reliable operation. Right hinged model is SK146R-HD.

Switchable 'color' LED light can be either blue or white, units have 3 x full 'soft' strips on sides and inner top for great lighting effect.

This unit is also available in black frame and grill in heated glass (Models SK146R-B-HD and SK146L-B-HD).



PARTS AND ENERGY INFO

- Schmick ECO Controller
- R600 100% ozone safe gas
- LOW E glass
- LED lighting
- German energy saving EBM fans
- Energy saving compressor
- Cyclopentane foaming

SPECIFICATIONS

Capacity (litres)	164
Holds (cans)	175
Noise Level	43.00
Consumption	1.97Kwh/24Hrs
Unit dimensions (WxDxH)	550 x 586 x 875
Lockable	Yes
Gross weight	43 kg



Tested and registered to GEMS Act 2012, using ISO testing standard 23953-2, unit meets MEPS requirements.

**Specifications and price of this product may change at any time

**For more information about this product please call us or visit our website.