

Bringing the worlds best chillers to Australia

MODEL: SK146R-B-HD

QUICK INFO

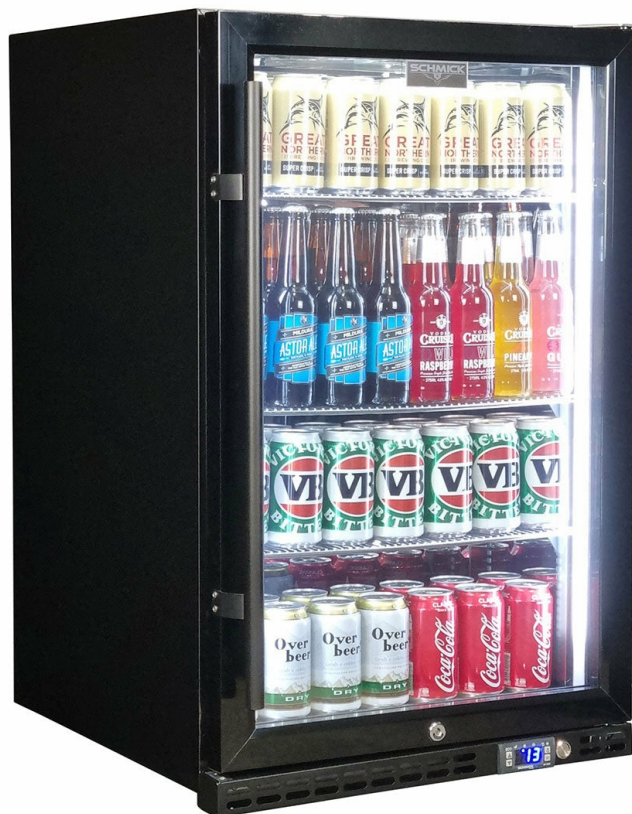
Quiet running low energy under bench front venting black glass door bar fridge. Unit has heated glass to stop condensation, the door is right hinged with lock and brand parts include a quality Schmick electronic controller and German EBM fans for reliable operation.

Switchable 'color' LED light can be either blue or white, units have 3 x full 'soft' strips on sides and inner top for great lighting effect.

This unit is also available in Left Hinged, model SK146L-B-HD.

PARTS AND ENERGY INFO

- Schmick ECO Controller
- R600 100% ozone safe gas
- LOW E glass
- LED lighting
- German energy saving EBM fans
- Energy saving compressor
- Cyclopentane foaming



SPECIFICATIONS

Capacity (litres)	164
Holds (cans)	175
Noise Level	43.00
Consumption	1.97Kwh/24Hrs
Unit dimensions (WxDxH)	550 x 586 x 875
Lockable	Yes
Gross weight	43 kg



SCHMICK Australia

Tested and registered to GEMS Act 2012, using ISO testing standard 23953-2, unit meets MEPS requirements.

**Specifications and price of this product may change at any time

**For more information about this product please call us or visit our website.