

Bringing the worlds best chillers to Australia

MODEL: BD425-Combo-B

QUICK INFO

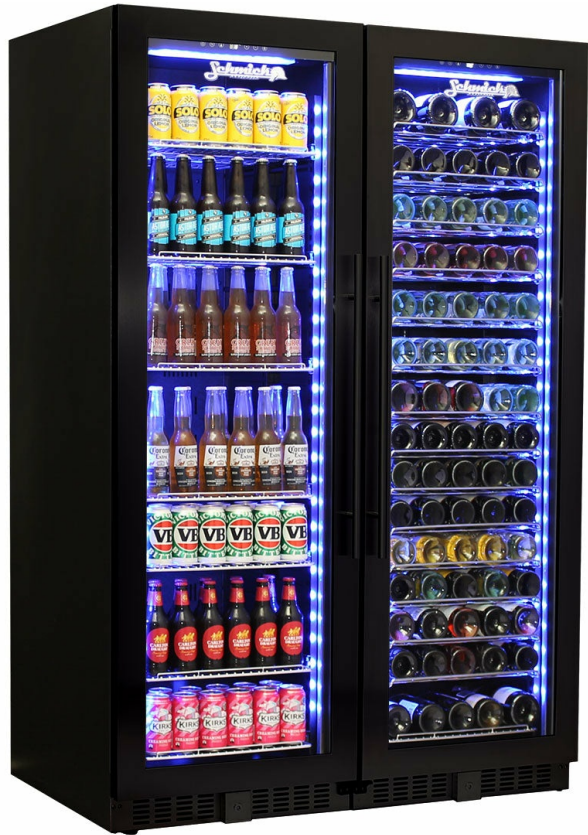
A stylish reliable **upright quiet running black glass door matching beer and wine fridge** with quality brand name parts and plenty of features. The slimline door frame and soft blue LED lighting makes it a real showpiece for any entertaining area.

1 x Beer and 1 x matching wine fridge - lockable doors, triple glazed LOW E glass helps prevent condensation and an electronic touch button control. The sliding rubber wine bottle saddles allow every size wine bottle to fit with ease, a great feature.

The shelving can interchange beer and wine and also can be moved up/down, giving you plenty of storage options.

PARTS AND ENERGY INFO

- Triple Glazing
- LED lighting
- Cyclopentane foaming
- 12Volt Fans
- LOW E glass
- R600 100% ozone safe gas



SPECIFICATIONS

Capacity (litres)	405
Holds (cans)	360
Noise Level	43.00
Consumption	3.4Kwh/24Hrs
Unit dimensions (WxDxH)	1200 x 695 x 1800
Lockable	Yes
Gross weight	238 kg

SCHMICK *Australia* 

**Specifications and price of this product may change at any time

**For more information about this product please call us or visit our website.