

Bringing the worlds best chillers to Australia

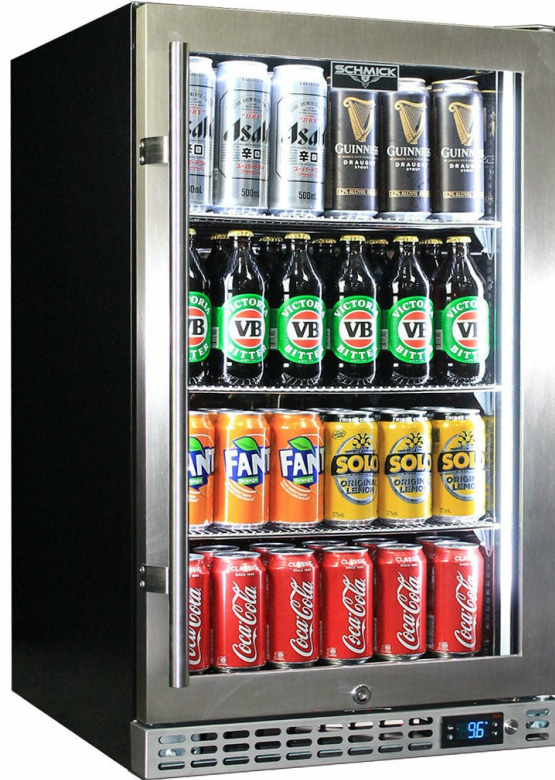
**MODEL:
SK126R-SS**

QUICK INFO

Quiet running low energy under bench front venting glass door bar fridge. Unit has triple glazed LOW E glass to prevent condensation, the door is reversible with lock and brand parts include a quality Schmick ECO electronic controller and German EBM fans for reliable operation.

Switchable 'color' LED light can be either blue or white, units have 3 x full 'soft' strips on sides and inner top for great lighting effect.

This unit is also available in black door frame and grill (Model SK126-B), and heated glass versions in Right And Left Hinged (models SK126R-HD & SK126L-HD).



PARTS AND ENERGY INFO

- Triple Glazing
- Schmick ECO Controller
- R600 100% ozone safe gas
- LOW E glass
- LED lighting
- German energy saving EBM fans
- Energy saving compressor
- Cyclopentane foaming

SPECIFICATIONS

Capacity (litres)	132
Holds (cans)	123
Noise Level	43.00
Consumption	1.18Kwh/24Hrs
Unit dimensions (WxDxH)	495 x 586 x 840
Lockable	Yes
Gross weight	43 kg



Tested and registered to GEMS Act 2012, using ISO testing standard 23953-2, unit meets MEPS requirements.

**Specifications and price of this product may change at any time

**For more information about this product please call us or visit our website.