

Bringing the worlds best chillers to Australia

MODEL:
SG1L-SQ

QUICK INFO

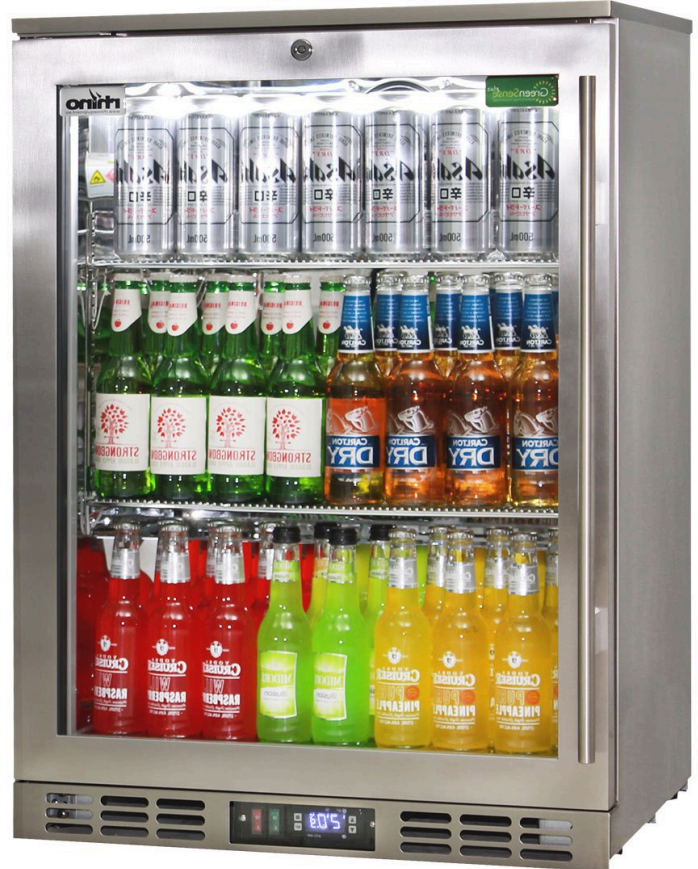
On Special: Last Of This Model 'Code', New Code SG1L-HDQ

Rhino quiet running all stainless heated glass door bar fridge, with brand name parts and designed by the best engineers , built by a quality long term manufacturer, to bring a reliable product to the market.

Polished stainless steel inner, low energy compressor, heated glass to stop condensation and German EBM fans make unit robust for tough conditions. Rhino technology produces one of the lowest energy heated glass options on the market.

PARTS AND ENERGY INFO

- LED lighting
- R600 100% ozone safe gas
- Cyclopentane foaming
- German EBM Fans



SPECIFICATIONS

Capacity (litres)	129
Holds (cans)	140
Noise Level	43.00
Consumption	2.23Kwh/24Hrs
Unit dimensions (WxDxH)	600 x 500 x 840
Lockable	Yes
Gross weight	65 kg

**Specifications and price of this product may change at any time
**For more information about this product please call us or visit our website.

