

# Bringing the worlds best chillers to Australia

## MODEL:

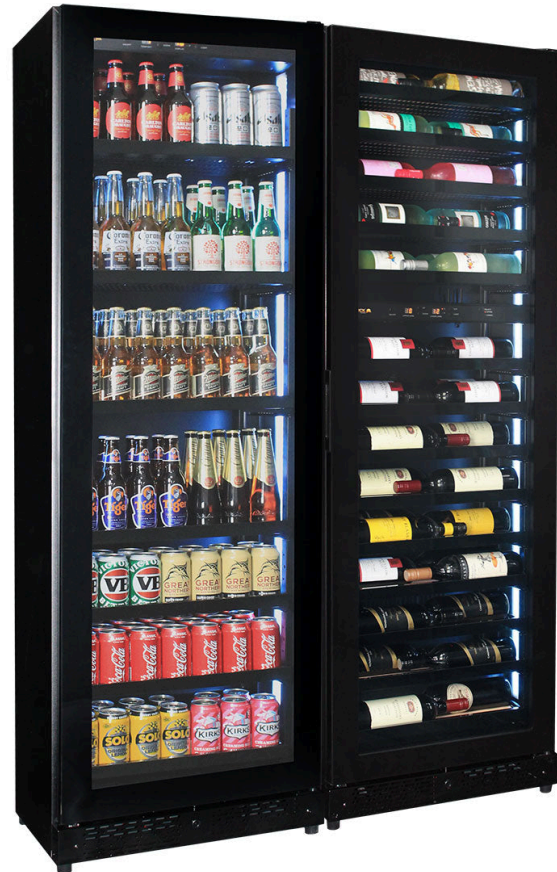
## zSK168-Combo3

### QUICK INFO

Classy upright quiet running 3 zone beer and wine fridge combination designed especially with a shallow depth for areas where space is a premium. Unit is front venting and design to be free-standing OR built into a cavity, it comes with special brackets to attach to the wall for stability. Top zone 5-15°C and bottom zone 7-18°C, and beer zone 1-18°C.

It has the highest quality inverter driven EMBRACO brand compressor that is excellent for low energy usage when cooling and the 'dimable' 5 x LED light colour choices of white, red, orange, blue or green make a great feature.

**\*\* Remember brackets come with unit to secure to wall - being so shallow they will topple with an open door \*\***



### PARTS AND ENERGY INFO

- Triple Glazing
- R600 100% ozone safe gas
- LOW E glass
- LED lighting
- Energy saving inverter compressor
- Cyclopentane foaming
- Comes Left Hinged (But Is Reversible)
- 12Volt Fans

### SPECIFICATIONS

Capacity (litres)	209
Holds (cans)	120
Noise Level	43.00
Consumption	2.6Kwh/24Hrs
Unit dimensions (WxDxH)	1200 x 395 x 1820
Lockable	Yes
Gross weight	188 kg



**SCHMICK** *Australia*

\*\*Specifications and price of this product may change at any time

\*\*For more information about this product please call us or visit our website.