

Bringing the worlds best chillers to Australia

MODEL:
HUS-SC88L-SS

QUICK INFO

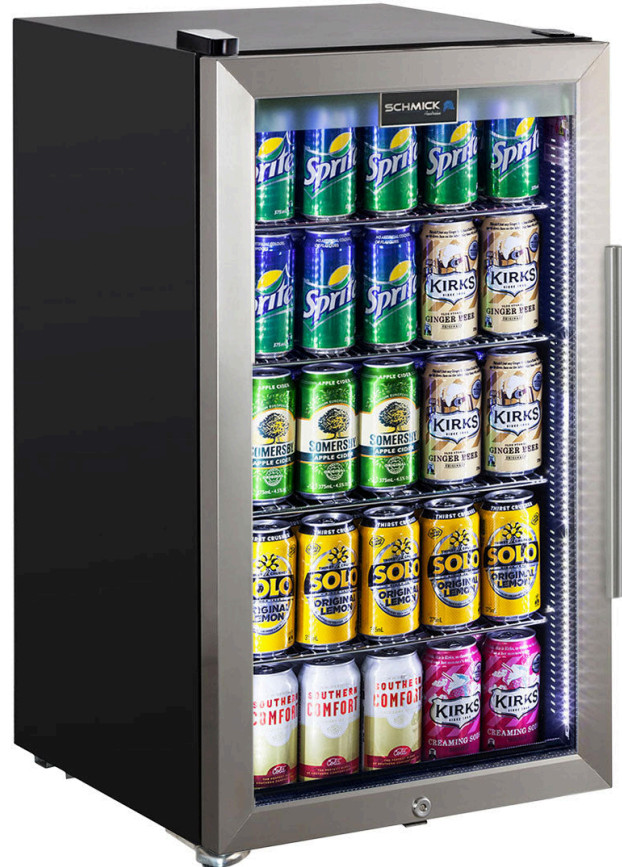
Tropical Rated Glass Door Bar Fridge made especially for outdoor alfresco areas in Australia.

Unit has triple glazed LOW E S/Steel door with lock and led strip lights. The shelving structure allows 5 x height of 375ml cans, so it can fit over 100 inside.

Perfect for that little outdoor barbie area or shed environment for a few spare cool bevies in times of need. Fine for indoor use too of course. *Unit is left hinged, [right hinged model is HUS-SC88-SS, Click Here To See.](#)

PARTS AND ENERGY INFO

- Triple Glazing
- R600 100% ozone safe gas
- LOW E glass
- LED lighting
- Cyclopentane foaming
- 12Volt Fans



SPECIFICATIONS

Capacity (litres)	98
Holds (cans)	115
Noise Level	41.00
Consumption	1.7Kwh/24Hrs
Unit dimensions (WxDxH)	470 x 500 x 850
Lockable	Yes
Gross weight	32 kg



**Specifications and price of this product may change at any time
**For more information about this product please call us or visit our website.