

# Bringing the worlds best chillers to Australia

**MODEL:**  
**HUS-SC700W**

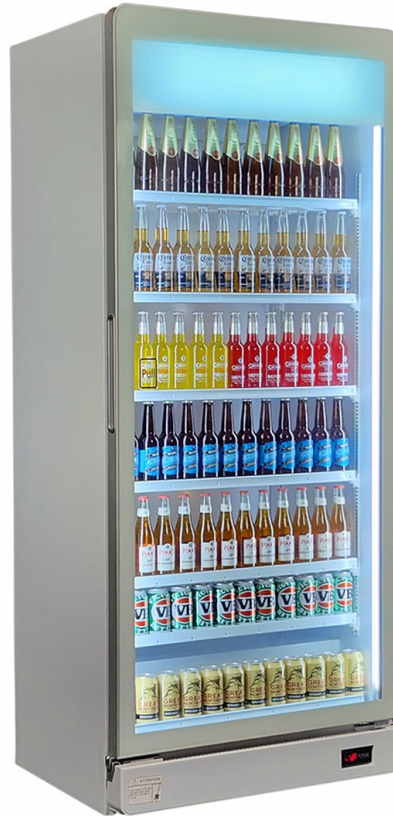
**QUICK INFO**

**Super Looking Upright Triple Glazed Bar Fridge** with plenty of shelving adjustments, led lighting, lock and castor wheels. A great product for your entertaining area, man cave or theater room.

The extra wide design looks great and with extra shelves you can fit 600 x CANS! Now that's what i call a party. Quality parts, 117 x shelf heights plus special lockable shelf clips so shelving is stable, very unique design.

**PARTS AND ENERGY INFO**

- Low Energy Compressor
- Triple Glazed
- LOW E Glass
- Door Sensor That Stops Operation While Stocking
- Low RPM Fan



**SPECIFICATIONS**

Capacity (litres)	737
Holds (cans)	600
Noise Level	47
Consumption	1.6Kwh/24Hrs
Unit dimensions (WxDxH)	890 x 655 x 2130
Lockable	No
Gross weight	65 kg



Tested and registered to GEMS Act 2012, using ISO testing standard 23953-2, unit meets MEPS requirements.

\*\*Specifications and price of this product may change at any time

\*\*For more information about this product please call us or visit our website.