

Bringing the worlds best chillers to Australia

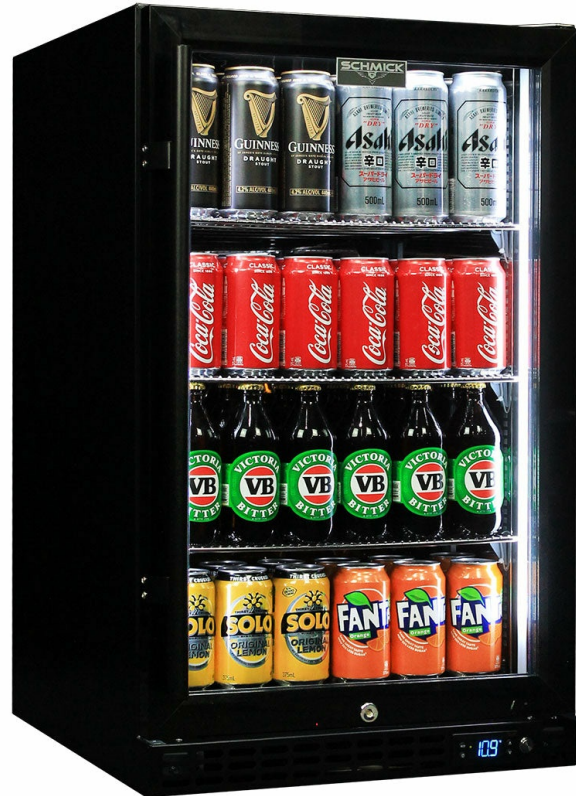
**MODEL:
SK126R-B-HD**

QUICK INFO

Quiet running under bench heated glass door bar fridge that stops condensation. Unit has brand parts that include a quality Schmick ECO electronic controller and German EBM fans for reliable operation. *Unit is right hinged (handle on left).

Switchable 'colour' LED light can be either blue or white, units have 3 x full 'soft' strips on sides and inner top for great lighting effect.

This unit is also available in S/Steel door frame and grill (Model SK126-SS), and heated stainless door Left & Right hinged (Models SK126L-HD & SK126R-HD).



PARTS AND ENERGY INFO

- Schmick ECO Controller
- R600 100% ozone safe gas
- LED lighting
- German energy saving EBM fans
- Energy saving compressor
- Cyclopentane foaming

SPECIFICATIONS

Capacity (litres)	132
Holds (cans)	121
Noise Level	43.00
Consumption	1.78Kwh/24Hrs
Unit dimensions (WxDxH)	495 x 586 x 840
Lockable	Yes
Gross weight	44 kg



Tested and registered to GEMS Act 2012, using ISO testing standard 23953-2, unit meets MEPS requirements.

**Specifications and price of this product may change at any time

**For more information about this product please call us or visit our website.