

Bringing the worlds best chillers to Australia

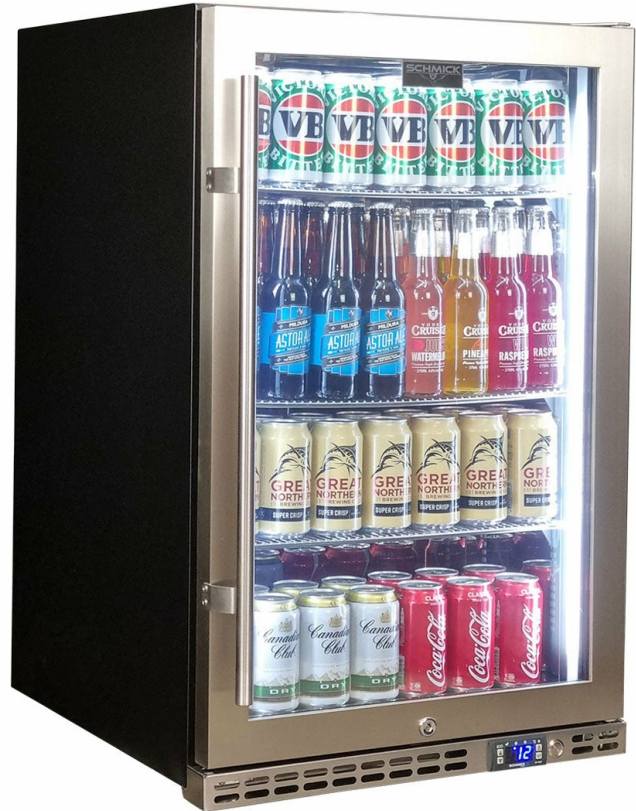
**MODEL:
SK146R-SS**

QUICK INFO

Quiet running low energy under bench front venting glass door bar fridge. Unit has triple glazed LOW E glass to prevent condensation, the door is reversible with lock and brand parts include a quality Schmick electronic controller and German EBM fans for reliable operation.

Switchable 'color' LED light can be either blue or white, units have 3 x full 'soft' strips on sides and inner top for great lighting effect.

This unit is also available in black frame and grill (Model SK146-B), and heated glass versions in Right And Left Hinged (models SK146R-HD & SK146L-HD).



PARTS AND ENERGY INFO

- German energy saving EBM fans
- Triple Glazing
- Cyclopentane foaming
- R600 100% ozone safe gas
- LED lighting
- LOW E glass
- Schmick ECO Controller
- Energy saving compressor

SPECIFICATIONS

Capacity (litres)	164
Holds (cans)	175
Noise Level	43.00
Consumption	1.22Kwh/24Hrs
Unit dimensions (WxDxH)	550 x 586 x 875
Lockable	Yes
Gross weight	43 kg



Tested and registered to GEMS Act 2012, using ISO testing standard 23953-2, unit meets MEPS requirements.

**Specifications and price of this product may change at any time

**For more information about this product please call us or visit our website.