

## Bringing the worlds best chillers to Australia

### MODEL:

**SD-A623-SGT2-BS**

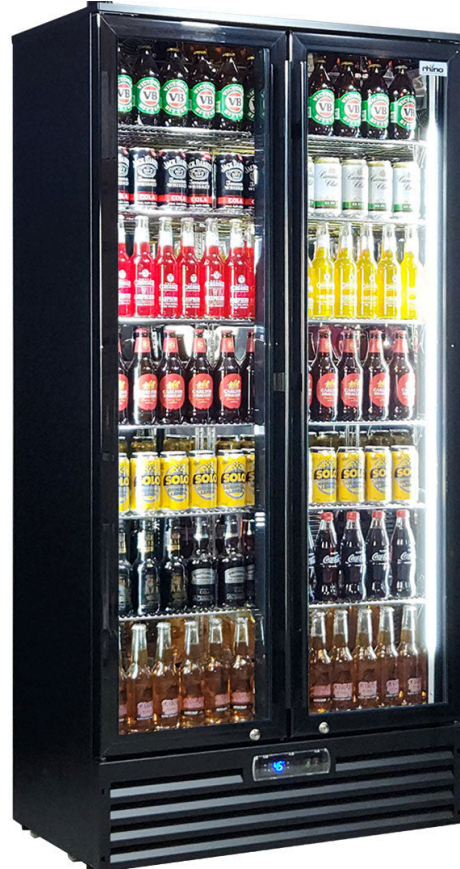
### QUICK INFO

**SCRATCH & DENT** This unit was damaged in transit - There are 2 minor dents on the right-hand side, and a small imprint from a forklift tyne up the top of the rear panel.

This unit is otherwise brand new.

The Rhino upright glass door fridge range has been made especially with shallow depth of 515mm, to assist with installations that are tight for room. Not only does the unit boast brand name parts it also looks stunning with polished stainless steel interior and long bar handle on door.

The dual-glazed and argon filled, Low E glass, ensures minimal condensation keeping your product visible to consumers. We also added 'electrically heated' area's to body of fridge where door meets as this is always prone to heavy condensation. A unique feature no one else does these days with cheaper units on market. Cheap to run with an official 10 Star Meps Rating.



### PARTS AND ENERGY INFO

- Cyclopentane foaming
- R600 100% ozone safe gas
- Electronic Contoller
- LED lighting
- German energy saving EBM fans

### SPECIFICATIONS

Capacity (litres)	473
Holds (cans)	450
Noise Level	47.00
Consumption	2.06Kwh/24Hrs
Unit dimensions (WxDxH)	900 x 520 x 1820
Lockable	Yes
Gross weight	115 kg



\*\*Specifications and price of this product may change at any time

\*\*For more information about this product please call us or visit our website.