

## Bringing the worlds best chillers to Australia

### MODEL:

**SD-A616-SK422L-B-HD**

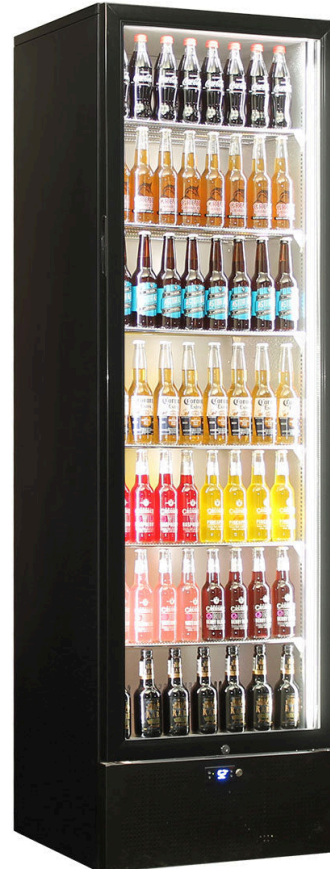
### QUICK INFO

**FACTORY DEFECT**—This unit has some light marks on the left side and a small dent on the right side (see photos). However, this does not impact its functionality.

Schmick classy energy efficient upright glass door bar fridge with heated glass to stop condensation, unit has unit has polished stainless steel interior, reversible door, led lighting and is lockable to keep your kids from 'borrowing' ya brews.

Brand parts include Quiet running Schmick inner fans and Schmick ECO controller for reliable low cost operation, the blue or white led function is popular.

Fully adjustable shelving, led strip lighting can be chosen to be blue or white with press of a button is a great feature.



### PARTS AND ENERGY INFO

- R600 100% ozone safe gas
- LED lighting
- Quiet running Schmick inner and rear fans
- Schmick ECO controller
- Cyclopentane foaming Led Lighting

### SPECIFICATIONS

Capacity (litres)	398
Holds (cans)	428
Noise Level	45.00
Consumption	3.27Kwh/24Hrs
Unit dimensions (WxDxH)	595 x 586 x 1996
Lockable	Yes
Gross weight	80 kg

**SCHMICK** Australia

\*\*Specifications and price of this product may change at any time

\*\*For more information about this product please call us or visit our website.